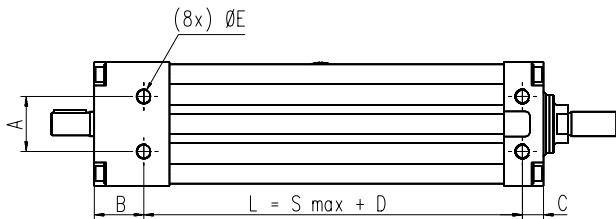


# ECT Series

## Mounting Options

### Mounting Holes - Standard Feature



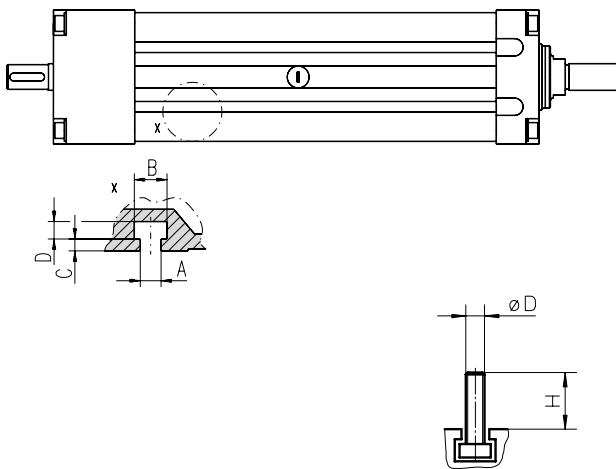
All ECT models have mounting holes as standard except when ordering mounting feet type F, when the holes are used to attach the feet. Note! The distance "B" and "D" for ECT90 units are different depending of the screw diameter of the unit.

	A	B	C	D	E
ECT90	45	39 <sup>1</sup> / 48 <sup>2</sup>	15	141 <sup>1</sup> / 167 <sup>2</sup>	M12 × 18
ECT130	60	54	23	216	M16 × 28

<sup>1</sup> ECT09-.....25

<sup>2</sup> ECT09-.....32

### T-slots and T-slot Bolts - Standard Feature

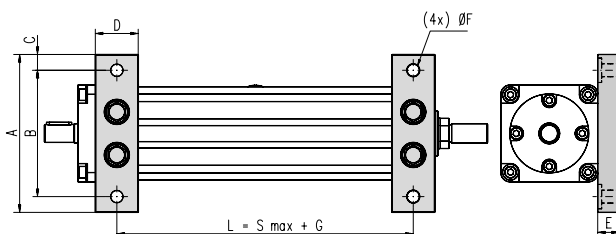


All ECT models have four T-slots, two on the top and two on the bottom, running along the entire profile. Suitable T-slot bolts can be ordered (see second table below).

	A	B	C	D
ECT90	6,4	10,5	3,5	4,5
ECT130	10,5	16,5	6,0	9,0

	Ø D	H	p/n
ECT90	M6	18	D310 314
ECT90	M6	26	D310 311
ECT130	M10	28	D800 089

### Mounting Feet type F



The mounting feet option comes mounted from factory if ordered. Note! The distance "G" for ECT90 units is different depending of the screw diameter of the unit.

	A	B	C	D	E	F	G
ECT90	155	125	15	40	20	13	141 <sup>1</sup> / 162 <sup>2</sup>
ECT130	220	176	22	60	30	17	216

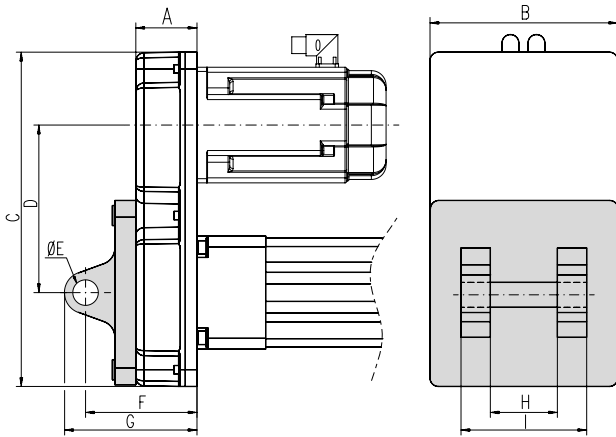
<sup>1</sup> ECT09-.....25

<sup>2</sup> ECT09-.....32

# ECT Series

## Mounting Options

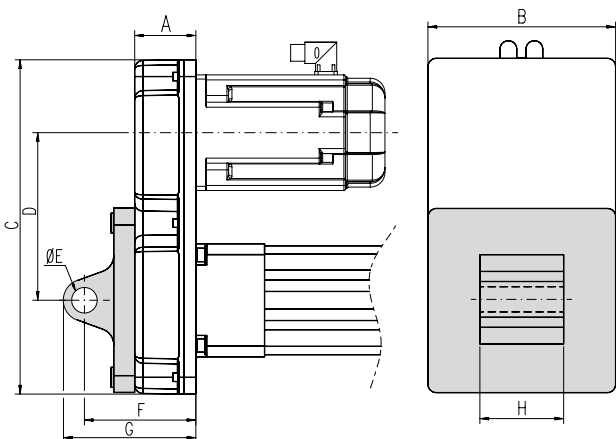
### Clevis type R



The clevis option comes mounted from factory on the belt gear if ordered. The clevis mounting option can only be ordered on ECT130 units with belt gear.

	A	B	C	D	E	F	G	H	I
ECT130	73	224	399	200	30 H9	134	159	90H4	170

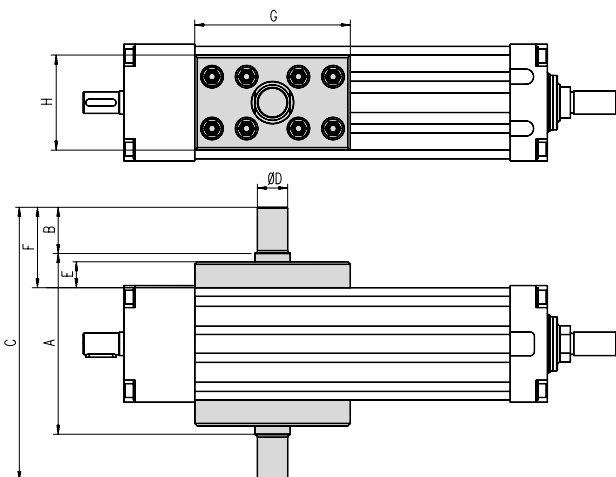
### Clevis type S



The clevis option comes mounted from factory on the belt gear if ordered. The clevis mounting option can only be ordered on ECT90 and ECT130 units with belt gear.

	A	B	C	D	E	F	G	H
ECT90	70	165	305	155	25 H9	122	147	70
ECT130	73	224	399	200	30 H9	134	159	90

### Trunnion type T



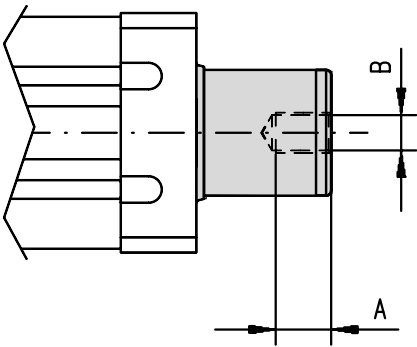
The trunnion option comes mounted from factory if ordered. The position along the profile can however be adjusted freely by the customer.

	A	B	C	D	E	F	G	H
ECT90	150	45	240	20f8	25	75	130	80
ECT130	210	53	316	35f8	30	93	180	110

# ECT Series

## Adapter Options

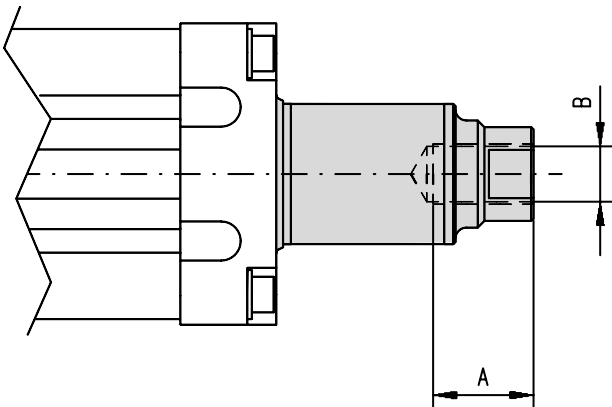
### Inside Thread type P and R



The inside thread option comes mounted from factory if ordered. Inside threads type P and R only fits ECT90 units where P only are possible on units with screw diameter 25 mm and R only are possible on units with screw diameter 32 mm.

	Type	A	B
ECT90	P	22	M16 × 2
ECT90	R	24	M20 × 1,5

### Inside Thread type T, V and X



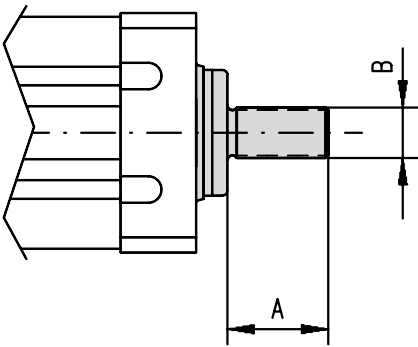
The inside thread option comes mounted from factory if ordered. Inside threads type T, V and X only fits ECT130 units.

	Type	A	B
ECT130	T	45	M27 × 2
ECT130	V	45	M33 × 2
ECT130	X	45	M30 × 2

# ECT Series

## Adapter Options

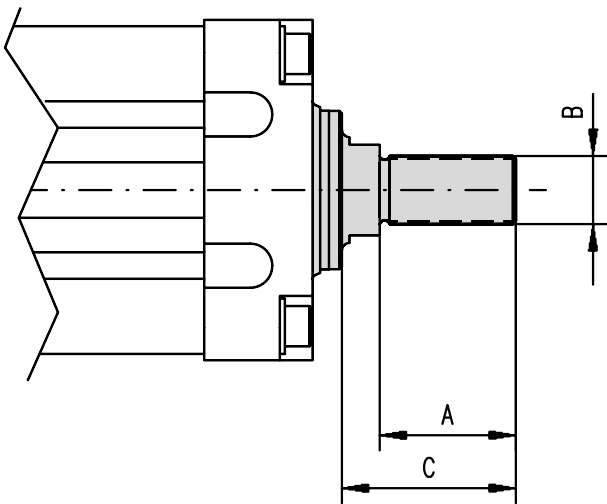
### Outside Thread type N and Q



The outside thread option comes mounted from factory if ordered. Outside threads type N and Q only fits ECT90 units where N only are possible on units with screw diameter 25 mm and Q only are possible on units with screw diameter 32 mm.

	Type	A	B
ECT90	N	32	M16 × 1,5
ECT90	Q	40	M20 × 1,5

### Outside Thread type S and U



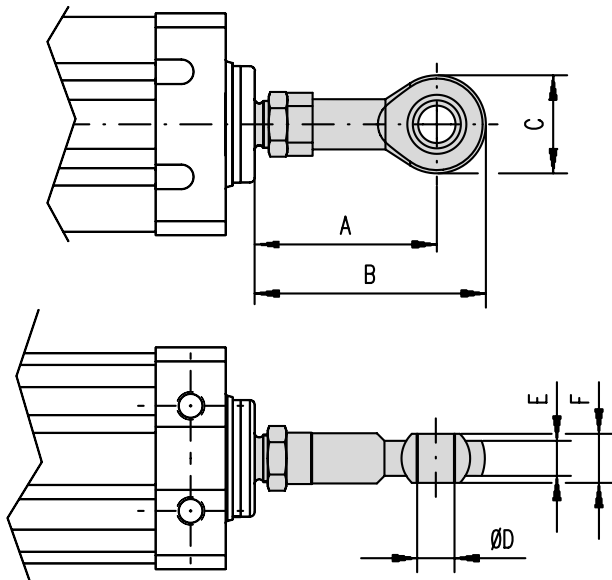
The outside thread option comes mounted from factory if ordered. Outside threads type S and U only fits ECT130 units.

	Type	A	B	C
ECT130	S	54	M27 × 2	66
ECT130	U	45	M33 × 2	57

# ECT Series

## Adapter Options

### Spherical Joint type J and K



The spherical joint comes mounted from factory if ordered. Joints type J and K only fits ECT90 units.

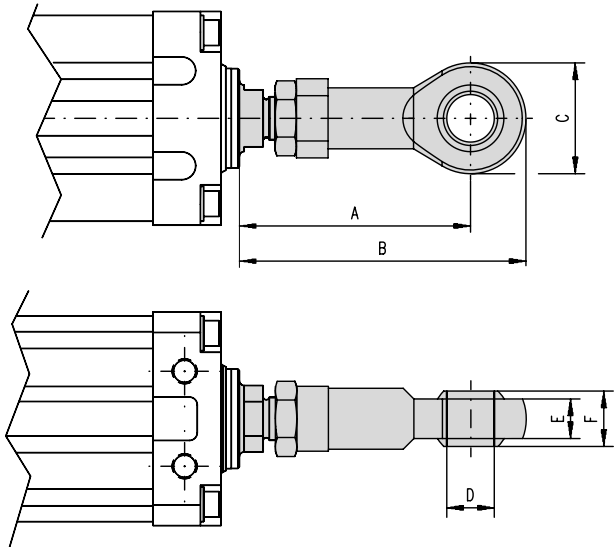
	Type	A	B	C	D	E	F
ECT90	J	76	97	42	16	15	21
ECT90	K	90	115	50	20	18	25

# ECT Series

## Adapter Options

### Spherical Joint type L and M

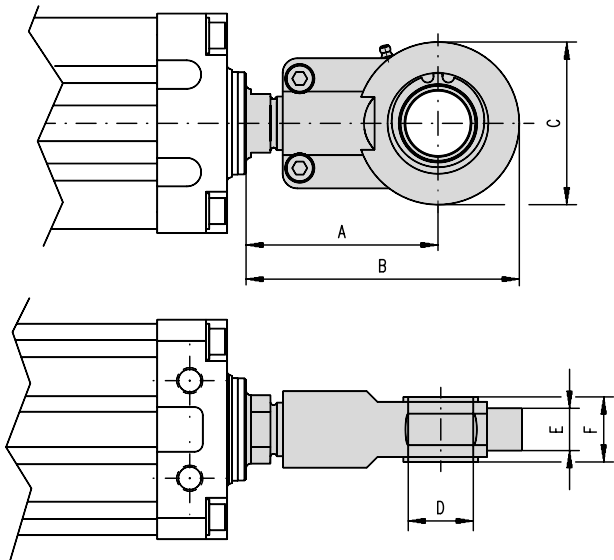
Type L



The spherical joint comes mounted from factory if ordered. Joints type L and M only fits ECT130 units. Joint type M includes a grease nipple.

	Type	A	B	C	D	E	F
ECT130	L	137	172	70	30	25	37
ECT130	M	115	164	97	40	32	40

Type M



# ECT Series

## Sensors Option

### Magnetic Sensors Option

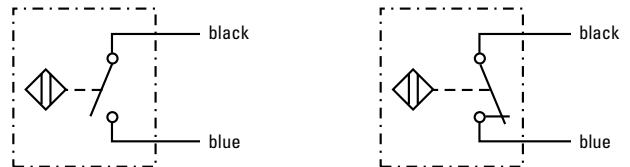
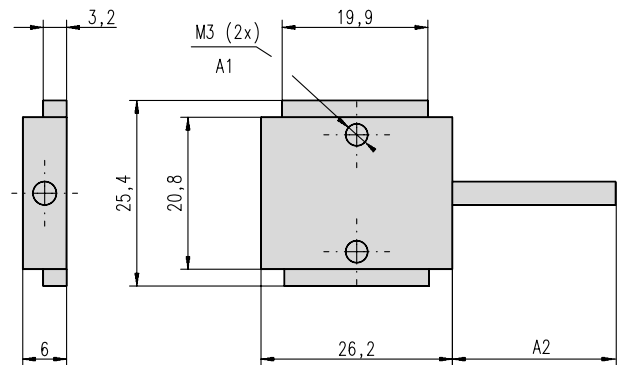
#### Technical Specification

Parameter		
Max. power	[W]	10
Max. voltage	[Vdc]	100
Max. current	[A]	0,5
LED indicator for switch		no
Protection class		IP67
Cable length	[m]	3
Cable cross section	[mm <sup>2</sup> ]	2 × 0,15
Operating temperature limits	[°C]	-25 – 65
Weight	[kg]	0,050

#### Part Numbers

Sensor type	suitable units	p/n
Normally closed	ECT90, ECT130	D535 071
Normally open	ECT90, ECT130	D535 070

The magnetic sensors are mounted directly in the sensor slots on both sides of the profile of the units. They require no additional mounting bracket. The sensor is fixed in position by two M3 size locking screws (A1). The cable (A2) is molded into the sensor. Up to nine normally open and nine normally closed sensors can be ordered to the unit using the ordering key. These sensors will be shipped with the unit but not mounted to the unit. Extra sensors can be ordered using the part numbers.



# ECT Series

## Protection Options

### Environment Protection Option S1

#### Technical Specification

Item	S1
External screws, bolts, nuts and washers	stainless class A2
Extension tube end	standard class A2

The S1 environment protection option will enhance the units ability to withstand harsh environments where water, acids and basic agents are present. All performance data and the life expectancy is the same as for standard units.

#### S1 - Wash down protection

Typical places where S1 is used are in slaughter houses, dairy plants, food plants or in any other light wash down application.